

Performing your original search, ***stem cell therapy for male penile enhancement***, in PMC will retrieve [113 records](#).

J Sex Med. Author manuscript; available in PMC Jul 2, 2010.

PMCID: PMC2895916

Published in final edited form as:

NIHMSID: NIHMS213726

[J Sex Med. Mar 2009; 6\(Suppl 3\): 320-327.](#)

doi: [10.1111/j.1743-6109.2008.01190.x](https://doi.org/10.1111/j.1743-6109.2008.01190.x)

## Potential of Adipose-Derived Stem Cells for Treatment of Erectile Dysfunction

[Guiting Lin](#),\* [Lia Banie](#), [Hongxiu Ning](#), [Anthony J. Bella](#), [Ching-Shwun Lin](#), and [Tom F Lue](#)

Knappe Molecular Urology Laboratory, Department of Urology, School of Medicine, University of California, San Francisco, CA 94143, USA

Corresponding Author: Guiting Lin, Department of Urology, University of California, San Francisco, CA 94143-0738, USA, Phone: 415-476-3801, Fax:

415-476-3803, Email: [glin@urology.ucsf.edu](mailto:glin@urology.ucsf.edu)

[Copyright notice](#) and [Disclaimer](#)

The publisher's final edited version of this article is available at [J Sex Med](#)

See other articles in PMC that [cite](#) the published article.

### Abstract

[Go to:](#)

#### Introduction

Adipose derived stem cells (ADSCs) are a somatic stem cell population contained in fat tissue that possess the ability for self-renewal, differentiation into one or more phenotypes and functional regeneration of damaged tissue, which will benefit the recovery of erectile function by using a stem cell based therapy.

#### Aim

To review available evidence concerning adipose derived stem cell availability, differentiation into functional cells, and the potential of these cells for the treatment of erectile dysfunction (ED).

#### Methods

We examined the current data associated with the definition and characterization of adipose derived stem cells, including the differentiation of these cells and the initial effects of adipose derived stem cell therapy in a rat model of erectile dysfunction.

#### Main Outcome Measures

There is strong evidence supporting the concept that ADSCs are a potential stem cell therapy source for treatment of erectile dysfunction.

#### Results

The adipose derived stem cells are paravascularly localized in the adipose tissue. Under specific induction

medium conditions, these cells differentiated into neuron-like cells, smooth muscle cells and endothelium in vitro. The insulin-like growth factor/insulin-like growth factor receptor (IGF/IGFR) pathway participates in neuronal differentiation while the fibroblast growth factor 2 (FGF2) pathway is involved in endothelium differentiation. In addition, the internal ribosomal entry sites (IRES) regulated gene translation is related to these types of differentiation. In a preliminary in-vivo experiment, the adipose derived stem cells functionally recovered the damaged erectile function. Therefore, the underlying mechanism needs be further examined.

## Conclusion

The adipose derived stem cells are a potential source of stem cells for treatment of erectile dysfunction, which highlights the possibility of an effective clinical therapy for ED in the near future.

**Keywords:** Erectile Dysfunction, Stem Cells, Adipose Derived Stem Cell, Differentiation, FGF2

## Introduction

[Go to:](#)

Stem cells (SC) are endowed with the capacity to self-renew and differentiate into various cell types, depending on the stimuli or signals that they receive. While embryonic stem cells (ESC) have greater differentiation potential than adult stem cells (ASC), the former will most likely take years to reach clinical application due to ethical concerns and governmental restrictions associated with its use. Since firstly reported in 1998[1], the human stem cell researches have attracted thousands of scientists worldwide. Actually, the wide range of uses for treatment of multitude of human diseases is the major argument in favor of human stem cell research [2,3].

Adipose-derived stromal cells (ADSCs) [4] have previously been shown to possess stem cell properties such as transdifferentiation and self-renewal. They are a somatic stem cell population contained in fat tissue and posses the properties of self-renewal, differentiation into one or more phenotypes and functional reproduction of damaged tissue [5,6]. ADSCs share the same properties of all stem cells, such as the ability to divide and renew themselves for long periods, and differentiate into specialized cells. Right now, the sources of adipose derived stem cells include three types of adipose tissues, including brown adipose tissue (BAT), white adipose tissue (WAT), and bone marrow adipose tissue.

ADSCs are virtually identical to Bone marrow stem cells (BMSC) in differentiation and therapeutic potential and are much easier and safer to obtain in large quantities. ADSCs therefore appear to be a better choice for future clinical application within the stem cell field[7]. Meanwhile, the ADSCs have many advantages compared to BMSCs, including the ability to isolate many more stem cells using a minimally invasive surgical procedure for extraction of the adipose tissue. Although the isolation and characterization of ADSCs have been well documented, the in-situ localization of ADSCs in BAT / WAT is poorly understood. By applying an extensive scan of the stem cell markers with immunohistology, it was shown that CD34+ cells, the well described progenitor/stem cell in adipose tissue, were clearly localized perivascularly [8]. Also, the isolated and purified ADSCs have successfully differentiated into neuron-like cells, smooth muscle cells, and endothelium in vitro [9–11].

In recent years, there has been much interest surrounding adipose derived stem cells, but the ADSCs field of research has actually been around for a long time. In 1964 [12], Rodbell developed the method of isolation of the stromal vascular fraction (SVF) from adipose tissue. In 1978, Bjontorp [13] found that periadipocytes have the ability for differentiation, which is defined as one of the properties of stem cells. It wasn't until 2001 that Zuk [4] first purified and named the adipose derived stem cells. Since their official inception, the adipose derived stem cells have been extensively studied from basic science to clinical research. In 2004, a German

group successfully transplanted adipose derived stem cells to repair the cranium of a 7-year-old girl [14]. In 2005, an experiment for the treatment of incontinence using the adipose derived stem cells was also implemented [11]. The ADSCs have also been shown to improve erectile function in neurogenic and diabetic animal models [15].

Compared to other kinds of adult stem cells, such as bone marrow-derived mesenchymal stem cells, ADSCs possess a clear advantage due to easy and repeatable access to subcutaneous adipose tissue and the simple isolation procedure. Nevertheless, limitations on the purification of ADSCs and the lack of knowledge regarding their molecular characterization are the major hindrances associated with the use of ADSCs.

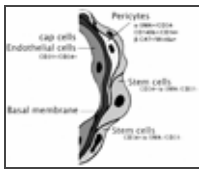
### Characterization and Localization of adipose derived stem cell in situ of the tissue

Go to:

Despite the importance of ADSCs and many publications on their characterization, the molecular characterization of ADSCs is not well established. By employing flow cytometry [16], histology [8] and other methods [17,18], several candidate cellular markers and genes have been screened (Table). Meanwhile, the cellular origin of ADSCs within adipose tissue remains unknown. Recently, Yamamoto et al [19] used immunofluorescence (IF) staining of mouse adipose tissue to identify cells expressing CD90, CD105, Sca-1, and/or p75NTR. The results showed widespread distribution of each of these markers, suggesting that they are not specific for ADSCs. In another recent study by Zannettino et al [20] attempted to identify ADSCs in human adipose tissue by employing IF staining for cellular markers 1A6.12, 1B5, STRO-1, CD146, and 3G5. While these markers were detected in two large blood vessels of unknown identity, their location in the adipose tissue cannot be inferred due to the lack of adipocytes or any other landmarks in the neighborhood of these two blood vessels. Furthermore, the study did not examine the small vessels (arterioles, venules, or capillaries) in adipose tissue, although the authors did acknowledge that mesenchymal stem cells (MSC), such as ADSCs, likely reside in specialized niches within the micro-vascular networks.

Molecular phenotype of adipose derived stem cells	
ADSC positive cellular markers and genes	ADSC negative cellular markers and genes
CD133	CD14
CD133	CD15
CD133	CD16
CD133	CD17
CD133	CD18
CD133	CD19
CD133	CD20
CD133	CD21
CD133	CD22
CD133	CD23
CD133	CD24
CD133	CD25
CD133	CD26
CD133	CD27
CD133	CD28
CD133	CD29
CD133	CD30
CD133	CD31
CD133	CD32
CD133	CD33
CD133	CD34
CD133	CD35
CD133	CD36
CD133	CD37
CD133	CD38
CD133	CD39
CD133	CD40
CD133	CD41
CD133	CD42
CD133	CD43
CD133	CD44
CD133	CD45
CD133	CD46
CD133	CD47
CD133	CD48
CD133	CD49
CD133	CD50
CD133	CD51
CD133	CD52
CD133	CD53
CD133	CD54
CD133	CD55
CD133	CD56
CD133	CD57
CD133	CD58
CD133	CD59
CD133	CD60
CD133	CD61
CD133	CD62
CD133	CD63
CD133	CD64
CD133	CD65
CD133	CD66
CD133	CD67
CD133	CD68
CD133	CD69
CD133	CD70
CD133	CD71
CD133	CD72
CD133	CD73
CD133	CD74
CD133	CD75
CD133	CD76
CD133	CD77
CD133	CD78
CD133	CD79
CD133	CD80
CD133	CD81
CD133	CD82
CD133	CD83
CD133	CD84
CD133	CD85
CD133	CD86
CD133	CD87
CD133	CD88
CD133	CD89
CD133	CD90
CD133	CD91
CD133	CD92
CD133	CD93
CD133	CD94
CD133	CD95
CD133	CD96
CD133	CD97
CD133	CD98
CD133	CD99
CD133	CD100
CD133	CD101
CD133	CD102
CD133	CD103
CD133	CD104
CD133	CD105
CD133	CD106
CD133	CD107
CD133	CD108
CD133	CD109
CD133	CD110
CD133	CD111
CD133	CD112
CD133	CD113
CD133	CD114
CD133	CD115
CD133	CD116
CD133	CD117
CD133	CD118
CD133	CD119
CD133	CD120
CD133	CD121
CD133	CD122
CD133	CD123
CD133	CD124
CD133	CD125
CD133	CD126
CD133	CD127
CD133	CD128
CD133	CD129
CD133	CD130
CD133	CD131
CD133	CD132
CD133	CD133
CD133	CD134
CD133	CD135
CD133	CD136
CD133	CD137
CD133	CD138
CD133	CD139
CD133	CD140
CD133	CD141
CD133	CD142
CD133	CD143
CD133	CD144
CD133	CD145
CD133	CD146
CD133	CD147
CD133	CD148
CD133	CD149
CD133	CD150
CD133	CD151
CD133	CD152
CD133	CD153
CD133	CD154
CD133	CD155
CD133	CD156
CD133	CD157
CD133	CD158
CD133	CD159
CD133	CD160
CD133	CD161
CD133	CD162
CD133	CD163
CD133	CD164
CD133	CD165
CD133	CD166
CD133	CD167
CD133	CD168
CD133	CD169
CD133	CD170
CD133	CD171
CD133	CD172
CD133	CD173
CD133	CD174
CD133	CD175
CD133	CD176
CD133	CD177
CD133	CD178
CD133	CD179
CD133	CD180
CD133	CD181
CD133	CD182
CD133	CD183
CD133	CD184
CD133	CD185
CD133	CD186
CD133	CD187
CD133	CD188
CD133	CD189
CD133	CD190
CD133	CD191
CD133	CD192
CD133	CD193
CD133	CD194
CD133	CD195
CD133	CD196
CD133	CD197
CD133	CD198
CD133	CD199
CD133	CD200
CD133	CD201
CD133	CD202
CD133	CD203
CD133	CD204
CD133	CD205
CD133	CD206
CD133	CD207
CD133	CD208
CD133	CD209
CD133	CD210
CD133	CD211
CD133	CD212
CD133	CD213
CD133	CD214
CD133	CD215
CD133	CD216
CD133	CD217
CD133	CD218
CD133	CD219
CD133	CD220
CD133	CD221
CD133	CD222
CD133	CD223
CD133	CD224
CD133	CD225
CD133	CD226
CD133	CD227
CD133	CD228
CD133	CD229
CD133	CD230
CD133	CD231
CD133	CD232
CD133	CD233
CD133	CD234
CD133	CD235
CD133	CD236
CD133	CD237
CD133	CD238
CD133	CD239
CD133	CD240
CD133	CD241
CD133	CD242
CD133	CD243
CD133	CD244
CD133	CD245
CD133	CD246
CD133	CD247
CD133	CD248
CD133	CD249
CD133	CD250
CD133	CD251
CD133	CD252
CD133	CD253
CD133	CD254
CD133	CD255
CD133	CD256
CD133	CD257
CD133	CD258
CD133	CD259
CD133	CD260
CD133	CD261
CD133	CD262
CD133	CD263
CD133	CD264
CD133	CD265
CD133	CD266
CD133	CD267
CD133	CD268
CD133	CD269
CD133	CD270
CD133	CD271
CD133	CD272
CD133	CD273
CD133	CD274
CD133	CD275
CD133	CD276
CD133	CD277
CD133	CD278
CD133	CD279
CD133	CD280
CD133	CD281
CD133	CD282
CD133	CD283
CD133	CD284
CD133	CD285
CD133	CD286
CD133	CD287
CD133	CD288
CD133	CD289
CD133	CD290
CD133	CD291
CD133	CD292
CD133	CD293
CD133	CD294
CD133	CD295
CD133	CD296
CD133	CD297
CD133	CD298
CD133	CD299
CD133	CD300
CD133	CD301
CD133	CD302
CD133	CD303
CD133	CD304
CD133	CD305
CD133	CD306
CD133	CD307
CD133	CD308
CD133	CD309
CD133	CD310
CD133	CD311
CD133	CD312
CD133	CD313
CD133	CD314
CD133	CD315
CD133	CD316
CD133	CD317
CD133	CD318
CD133	CD319
CD133	CD320
CD133	CD321
CD133	CD322
CD133	CD323
CD133	CD324
CD133	CD325
CD133	CD326
CD133	CD327
CD133	CD328
CD133	CD329
CD133	CD330
CD133	CD331
CD133	CD332
CD133	CD333
CD133	CD334
CD133	CD335
CD133	CD336
CD133	CD337
CD133	CD338
CD133	CD339
CD133	CD340
CD133	CD341
CD133	CD342
CD133	CD343
CD133	CD344
CD133	CD345
CD133	CD346
CD133	CD347
CD133	CD348
CD133	CD349
CD133	CD350
CD133	CD351
CD133	CD352
CD133	CD353
CD133	CD354
CD133	CD355
CD133	CD356
CD133	CD357
CD133	CD358
CD133	CD359
CD133	CD360
CD133	CD361
CD133	CD362
CD133	CD363
CD133	CD364
CD133	CD365
CD133	CD366
CD133	CD367
CD133	CD368
CD133	CD369
CD133	CD370
CD133	CD371
CD133	CD372
CD133	CD373
CD133	CD374
CD133	CD375
CD133	CD376
CD133	CD377
CD133	CD378
CD133	CD379
CD133	CD380
CD133	CD381
CD133	CD382
CD133	CD383
CD133	CD384
CD133	CD385
CD133	CD386
CD133	CD387
CD133	CD388
CD133	CD389
CD133	CD390
CD133	CD391
CD133	CD392
CD133	CD393
CD133	CD394
CD133	CD395
CD133	CD396
CD133	CD397
CD133	CD398
CD133	CD399
CD133	CD400
CD133	CD401
CD133	CD402
CD133	CD403
CD133	CD404
CD133	CD405
CD133	CD406
CD133	CD407
CD133	CD408
CD133	CD409
CD133	CD410
CD133	CD411
CD133	CD412
CD133	CD413
CD133	CD414
CD133	CD415
CD133	CD416
CD133	CD417
CD133	CD418
CD133	CD419
CD133	CD420
CD133	CD421
CD133	CD422
CD133	CD423
CD133	CD424
CD133	CD425
CD133	CD426
CD133	CD427
CD133	CD428
CD133	CD429
CD133	CD430
CD133	CD431
CD133	CD432
CD133	CD433
CD133	CD434
CD133	CD435
CD133	CD436
CD133	CD437
CD133	CD438
CD133	CD439
CD133	CD440
CD133	CD441
CD133	CD442
CD133	CD443
CD133	CD444
CD133	CD445
CD133	CD446
CD133	CD447
CD133	CD448
CD133	CD449
CD133	CD450
CD133	CD451
CD133	CD452
CD133	CD453
CD133	CD454
CD133	CD455
CD133	CD456
CD133	CD457
CD133	CD458
CD133	CD459
CD133	CD460
CD133	CD461
CD133	CD462
CD133	CD463
CD133	CD464
CD133	CD465
CD133	CD466
CD133	CD467
CD133	CD468
CD133	CD469
CD133	CD470
CD133	CD471
CD133	CD472
CD133	CD473
CD133	CD474
CD133	CD475
CD133	CD476
CD133	CD477
CD133	CD478
CD133	CD479
CD133	CD480
CD133	CD481
CD133	CD482
CD133	CD483
CD133	CD484
CD133	CD485
CD133	CD486
CD133	CD487
CD133	CD488
CD133	CD489
CD133	CD490
CD133	CD491
CD133	CD492
CD133	CD493
CD133	CD494
CD133	CD495
CD133	CD496
CD133	CD497
CD133	CD498
CD133	CD499
CD133	CD500
CD133	CD501
CD133	CD502
CD133	CD503
CD133	CD504
CD133	CD505
CD133	CD506
CD133	CD507
CD133	CD508
CD133	CD509
CD133	CD510
CD133	CD511
CD133	CD512
CD133	CD513
CD133	CD514
CD133	CD515
CD133	CD516
CD133	CD517
CD133</	

literature, it has been proposed that ADSCs are vascular precursor (stem) cells at various stages of differentiation [8]. These studies serve to solidify the idea that adipose derived stem cells are in fact derived from the adipose vasculature where the stem cells reside in a microenvironment that has been hypothetically named as the adipose derived stem cell niche (Fig 1).



**Fig 1**

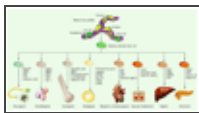
A hypothetical scheme of the adipose derived stem cells niche consists of four components: cap cells-endothelial cells, basal membrane, supporting cells-pericytes, and stem cells.

## The isolation and differentiation of adipose derived stem cells in vitro

[Go to:](#)

In recent years, the adipose derived stem cells as a new source of adult stem cells has been extensively explored [14,22,23]. The adipose derived stem cells can be developed with a series of steps including isolation, sorting, culture, differentiation and application. Firstly, the adipose tissue need be digested with collagenase type IA, sorted by a cell strainer and specific stem cell markers. These cells can be cultured in regular culture medium and can be induced into different cell types using induction medium. After described steps, the cells can be used for many different purposes. Using flow cytometric sorting, these adipose derived stem cells have been shown to share many of the same cellular markers with the Bone marrow stem cells, such as CD9, CD10, CD13, CD29, CD117, CD34, CD90, CD105 and STRO-1 (Table ).

The ADSCs display multipotency by retaining the ability to differentiate into cell types of different lineages, including neurogenic, chondrogenic, osteogenic, adipogenic, myogenic, cardiomyogenic, vascular/endothelial, hepatic, and pancreatic differentiation (Fig. 2). In the current review, we mainly focus on neurogenic differentiation, smooth muscle differentiation, and endothelial differentiation, which encompass the dominant differentiation pathways for functional cells located within the penile erectile tissue.



**Fig 2**

Schematic for the multilineage differentiation of adipose derived stem cells and associated factors.

## Neuron differentiation

It has been shown that ADSCs can be induced by isobutylmethylxanthine (IBMX) to differentiate into neuron-like cells *in vitro* [5,10,24]. This IBMX-induced neuronal differentiation was mediated by the IGF-I signaling pathway. The significance of these studies is that ADSCs has the potential to treat degenerative neurological diseases including neurogenic ED, which frequently occurs in patients who have undergone pelvic floor surgeries or radiation.

Due to the fact that future clinical applications will likely to use these adult stem cells in an autologous fashion, ADSCs could be induced to differentiate into neuron-like cells which expressed neuronal markers S100, nestin, and NF70. Isobutylmethylxanthine (IBMX), indomethacin (INDO), and insulin were the active ingredients in a previously established neural induction medium (NIM). It was also found that IBMX alone was as effective as NIM in the induction of morphological changes as well as neuronal marker expression. The cellular signaling pathways involved in this neuron differentiation were studied by treating ADSCs with IBMX in the presence or in the absence of each of eight specific inhibitors of different signaling pathways (JAK/STAT, PKA, PI3K, MEK, Wnt/Frizzled, ERK/MAPK, TGF- $\beta$ , and insulin growth factor [IGF]- I). PPP, a specific inhibitor of IGF-I signaling, was the only inhibitor that showed significant inhibition of IBMX-

induced ADSCs neuronal differentiation, as determined by changes in cell morphology in the initial screening. Further examination by immunofluorescence staining showed that the neuronal marker,  $\beta$ -III-tubulin, was highly induced in IBMX-treated ADSCs, and the induction was significantly suppressed by PPP. Western blotting followed by densitometry showed that PPP suppressed IBMX-induced  $\beta$ -III-tubulin expression by 43%, 88%, and 84% when used to treat the cells for 1, 3, and 24 hr, respectively. Treatment of ADSCs with IBMX also led to the phosphorylation of IGF-I receptor at tyrosine 1136 (Y1136), as determined by immunofluorescence staining with an antibody that reacts specifically with Y1136. This effect was also abrogated by PPP. Thus, the IBMX-induced neuron-like differentiation of ADSCs is mediated by IGF signaling through the phosphorylation of IGF-IR at Y1136 [25].

### Smooth muscle cells differentiation

The smooth muscle is a major component of erectile tissues and essential for the normal erectile function. The use of adipose derived stem cells for cell-based tissue engineering and regeneration strategies represents a promising alternative for the treatment of erectile dysfunction. For such strategies to succeed, a reliable source of smooth muscle precursor cells must be identified. In 2006 [11], Rodríguez LV et al checked the capacity of adipose-derived stem cells to differentiate into phenotypic and functional smooth muscle cells *in vitro*. The cells were cultured in smooth muscle differentiation medium for the differentiation. Smooth muscle differentiation of ADSCs induced genetic expression of all smooth muscle markers and further confirmed by increased protein expression of smooth muscle cell-specific alpha actin (ASMA), calponin, SM22, myosin heavy chain (MHC), and smoothelin. Clonal studies of adipose derived multipotent cells demonstrated differentiation of these cells into smooth muscle cells in addition to trilineage differentiation capacity. Importantly, smooth muscle-differentiated cells, but not their precursors, exhibit the functional ability to contract and relax in direct response to pharmacologic agents. From their result, it has been demonstrated that the adipose-derived cells have the potential to differentiate into functional smooth muscle cells and thus, adipose tissue can be a useful source of cells for treatment of injured tissues where smooth muscle plays an important role.

Furthermore, Lee WC et al [26] explored the regulation of smooth muscle cell (SMC) marker  $\alpha$ -smooth muscle actin ( $\alpha$ -SMA) during the differentiation of ADSCs to smooth muscle cell. The ADSCs differentiated toward the SMC lineage under the exogenous biochemical stimulation. The immunofluorescence staining and Western blot analysis detected protein expression of the early SMC marker  $\alpha$ -SMA in both control and experiment groups. Expression of  $\alpha$ -SMA in ADSCs significantly increased when treated with transforming growth factor- $\beta$ 1, while  $\alpha$ -SMA expression only slightly increased in the presence of retinoic acid (RA),  $\beta$ -mercaptoethanol and ascorbic acid. Treatment with platelet-derived growth factor-BB, RA and dibutyryl-cyclic adenosine monophosphate decreased the expression of  $\alpha$ -SMA significantly.

More interestingly, in 2008, Andersen DC [27] found a non-haematopoietic "side population" of CD45(-) cells within ADSCs possessing the ability to differentiate into smooth muscle cells. Simultaneous qRT-PCR of 64 genes revealed that the freshly isolated CD45(-) was highly enriched for cells expressing genes related to stem cells, the Notch pathway, and early vascular precursors. Notably, the expression of smooth muscle actin, C-met and CD34 together with Angpt2, Flk1, VE-cadherin, and CD31 suggested a phenotypic resemblance to pericytes. It has been observed *in vitro* myogenic specification of CD45(-) cells when co-cultured with myoblasts. Furthermore, immediate intramuscular engraftment of non-cultured CD45(-) cells gave rise to myofibres and cells lining blood vessels.

### Endothelium differentiation

Endothelial dysfunction is a prominent feature of a wide variety of diseases including ED, and therapeutic angiogenesis is one of the strategies that have been considered for the restoration of endothelial function. Earlier efforts of this therapeutic strategy largely focused on injection of proangiogenic proteins or vectors expressing such proteins. These efforts were fruitful in pre-clinical studies but encountered obstacles in clinical trials. Growth factor therapy for ED has also been successfully demonstrated in animal models but has not reached clinical trials [28]. On the other hand, recent studies have shifted to cell-based therapies, such as using progenitor and stem cells [29–31].

It has been previously shown that ADSCs were localized within the vasculature of adipose tissue [8] and displayed multipotency, as witnessed by the ability of ADSCs to differentiate into endothelial cells. It has been hypothesized that ADSCs could be used to restore the endothelial function in vasculogenic ED. As a first step, we demonstrated that indeed ADSCs differentiated into endothelial cells in the penile sinusoids. We then sought to identify the mechanism underlying ADSCs endothelial differentiation. Using cell cultures we first tested whether ADSCs could differentiate into endothelial cells when grown in Endothelial Growth Medium 2 (EGM2), a commonly used endothelial growth medium. We observed that switching ADSCs from DMEM to EGM2 for approximately 7 days was sufficient to induce expression of endothelial markers, LDL-uptake, and endothelial tube formation. We also observed that this endothelial differentiation was reversible because switching ADSCs back to DMEM resulted in the disappearance of all of the above-mentioned endothelial characteristics. Upon returning to EGM2, the endothelial characteristic reappeared, albeit at reduced levels. Thus, EGM2 did contain factors necessary and sufficient to induce ADSCs endothelial differentiation. Subsequent experiments led to the identification of FGF2 and vitamin C as the only two plausible factors.

### Mechanism of the differentiation of adipose derived stem cells

[Go to:](#)

A central question in stem cell research is how stem cells maintain the ability to self-renew and replicate while producing differentiated daughter cells, in addition to which signaling events control stem cell proliferation and differentiation [1,3,7,32,33]. Meanwhile, much research effort has been implemented in manipulating stem cells into desired cell types for use in clinical application. Studies have revealed that stem cells use evolutionarily conserved molecular pathways and machinery for their differentiation and self-renewal. Genes that participate in these events are regulated at different levels, such as transcription, translation, and protein modification.

Initiation of translation of most eukaryotic mRNAs commences with 5' end-dependent recruitment of 40S ribosomal subunits to the mRNA. The 40S subunit carrying the initiator methionine-tRNA and certain eukaryotic initiation factors (eIFs) are thought to scan the mRNA in a 5' to 3' direction until an appropriate start codon is encountered, at which stage a 60S subunit joins to form an 80S ribosome that can decode the RNA into protein. A subset of mRNAs contain internal ribosomal entry sites (IRES), usually in the 5' UTR, enable end-independent initiation to occur and has been recruited as a major translational format under certain stimuli (i.e. stress) which is an initial step in activation of stem cells for differentiation [34,35].

Recently, it has been demonstrated that translational regulation of fibroblast growth factor 2 (FGF2) plays a critical role in maintaining self-renewal and differentiation of ADMSC [36–39]. The human FGF2 mRNA is one of the most striking systems of translational regulation. Its highly structured 5' leader region contains 5 initiation codons; an AUG coding for an 18 KDa isoform and 4 noncanonical CUGs, coding for high-molecular-weight isoforms (HMW) of 22, 22.5, 24 and 34 KDa. It was shown previously that translation initiation (except for the 34 kDa FGF2 isoform) could be driven by IRES located in the mRNA 5' untranslated region, allowing translation to occur by a non-classical cap-independent mechanism [36,40]. These different

FGF2 isoforms have different localizations and functions. The AUG-initiated 18 kDa isoform is cytoplasmic, and it is secreted and acts by the classical para- or autocrine way involving membrane receptor recognition. In contrast, the CUG initiated FGF-2 isoforms are nuclear and have an intracrine action that involves interaction with nuclear partners. FGF2 IRES activity is regulated in a developmental and tissue-specific manner. It was also noted that FGF2 is the key molecule for maintenance of stemness in ADSCs [41]. In this regard, FGF2 appears to be of similar importance for hADSCs self-renewal as leukemia inhibitory factor (LIF) is for mouse ESCs.

## Application of stem cells/adipose derived stem cells

[Go to:](#)

### Stem cell-based therapy for erectile dysfunction

In 2003 Deng et al showed that bone marrow stem cells (BMSC) transduced with eNOS were able to improve the erectile function of aged rats [42]. In 2004 our research showed that ESC transfected with brain-derived neurotrophic factor (BDNF) could restore the erectile function of rats whose cavernous nerves were experimentally damaged [31]. Bivalacqua et al [29,30] showed that BMSC alone or transduced with eNOS were able to reverse age-associated ED. Song et al [43] showed that magnetic resonance could be used to non-invasively evaluate human BMSC in corpus cavernous of rats and rabbits. Also, Song et al showed that immortalized human BMSC (by v-myc transfection) transplanted into rat corpus cavernosum could differentiate into endothelial and smooth muscle cells.

Also, the skeletal muscle-derived stem cells (MDSCs) have been converted into smooth muscle cells (SMCs) both *in vitro* and *in vivo*, and were shown to recover erectile function in the aged rats [44]. Although these results suggest exogenous stem cell implantation and/or endogenous stem cell modulation might be a viable therapeutic approach for age-related ED, the application of MDSCs obtained from muscle is limited due to the source and number of this kind of stem cell.

Song et al investigated the feasibility of applying neural crest stem cells (NCSCs) to repair injury in the penile cavernosum and found that these stem cells differentiated into either endothelial cells or smooth muscle cells, as shown by their expression of cell type-specific markers. However, the function of these differentiated cells had not been explored in their experiment [45].

### Application of adipose derived stem cells

Garcia et al isolated human ADSCs from a liposuction procedure, and administered according to a strict protocol that involves infusion of the cells into the target lesion along with fibrin glue in a human phase IIb clinical study [46]. The clinical results satisfied the effectiveness to induce healing in a complex of perianal fistulas, though the underlying mechanism needs to be further explored.

Also, human ADSCs have been successfully applied to reverse urethral incontinence in an animal model in 2005 [47]. The ADSCs were also isolated from human lipoaspirate, labeled with a fluorescent tag and suspended in Hanks' balanced salt solution. The multiple animal models, including 8 Rnu athymic rats and 6 SCID mice underwent laparotomy and injection of ADSCs into the bladder and urethra. The ADSCs remained viable for up to 12 weeks in the lower urinary tract and differentiated into smooth muscle cells, which implies that ADSCs may provide a feasible and cost-effective cell source for urinary tract reconstruction. The major defect of this study is the lack of functional studies on those animals.

### Adipose derived stem cells for erectile dysfunction

In our laboratory, a pilot experiment has been conducted [15]. Thirty 3-month old Sprague-Dawley male rats were randomly divided into three groups, including the sham, control and ADSCs injection groups. Following bilateral cavernous nerve crush injury in the control and ADSCs injection groups, the autologous adult ADSCs were isolated from the rats. The ADSCs were cultured in vitro and then transplanted back into the rat penis in the ADSCs injection group, while the sham and control group were injected with PBS into the penis. Five weeks later, the erectile function of each group was checked by measuring the intracavernosal pressure (ICP), and the fate of transplanted ADSCs was assayed by immunochemical histology. The results indicated that the mean increase in ICP for animals in the sham vs. untreated crush injury groups was  $106.2 \pm 14.1 \text{ cmH}_2\text{O}$  versus  $18.0 \pm 8.0 \text{ cmH}_2\text{O}$ , respectively ( $p < 0.05$ ). Rats treated with ADSCs after crush injury significantly demonstrated greater ICP responses relative to untreated controls ( $p < 0.05$ ) with ICP values at  $85.1 \pm 7.5 \text{ cmH}_2\text{O}$ . There was evidence that some stem cells labeled with BrdU appeared to differentiate into endothelial cells and smooth muscle cells within the erectile tissue.

After analyzing our results, several possible mechanisms underlying the treatment were proposed. First, the cell-based mechanism indicated that ADSCs differentiated into local functional cells, including smooth muscle cells and endothelium. Second, the growth factor-based mechanism indicated that the growth factors secreted from the ADSCs underwent one of the following situations: (1) Recruit local stem cells and activity to differentiation; (2) attract the systemic stem cells to the penis by homing effect; (3) IGF-1 promote local functional cell growth; (4) the neurotrophic effect to promote nerve regeneration, which need to be confirmed by further studies.

### Perspectives

The adipose-derived stem cells are regarded as candidates for the treatment of erectile dysfunction due to many factors. These stem cells can easily be obtained in large quantities under local anesthesia, they possess the potential to undergo long-term proliferation, self-renewal and multipotent differentiation, and they can serve as a vehicle for release of neurotrophins, such as nerve growth factor, to repair damages due to diabetes or pelvic surgery.

In addition to using adipose derived stem cells for treatment of erectile dysfunction, there are several other kinds of andrology disorders that can benefit from stem cell therapy, including the reconstruction of penile tissue, enlargement of the penis, and strengthening of the vaginal muscle. There is also the potential application for use of adipose derived stem cells in steroid hormone therapy.

### Reference

Go to:

1. Thomson JA, Itskovitz-Eldor J, Shapiro SS, Waknitz MA, Swiergiel JJ, Marshall VS, Jones JM. Embryonic stem cell lines derived from human blastocysts. *Science*. 1998;282:1145–1147. [PubMed]
2. Halvorsen YC, Wilkison WO, Gimble JM. Adipose-derived stromal cells--their utility and potential in bone formation. *Int J Obes Relat Metab Disord*. 2000;24 Suppl 4:S41–S44. [PubMed]
3. Yu J, Vodyanik MA, Smuga-Otto K, Antosiewicz-Bourget J, Frane JL, Tian S, Nie J, Jonsdottir GA, Ruotti V, Stewart R, Slukvin II, Thomson JA. Induced pluripotent stem cell lines derived from human somatic cells. *Science*. 2007;318:1917–1920. [PubMed]
4. Zuk PA, Zhu M, Mizuno H, Huang J, Futrell JW, Katz AJ, Benhaim P, Lorenz HP, Hedrick MH. Multilineage cells from human adipose tissue: Implications for cell-based therapies. *Tissue Eng*. 2001;7:211–



228. [[PubMed](#)]

5. Kokai LE, Rubin JP, Marra KG. The potential of adipose-derived adult stem cells as a source of neuronal progenitor cells. *Plast Reconstr Surg.* 2005;116:1453–1460. [[PubMed](#)]
6. Kurita M, Matsumoto D, Shigeura T, Sato K, Gonda K, Harii K, Yoshimura K. Influences of centrifugation on cells and tissues in liposuction aspirates: Optimized centrifugation for lipotransfer and cell isolation. *Plast Reconstr Surg.* 2008;121:1033–1041. [[PubMed](#)]
7. Yoshimura K, Sato K, Aoi N, Kurita M, Inoue K, Suga H, Eto H, Kato H, Hirohi T, Harii K. Cell-assisted lipotransfer for facial lipoatrophy: Efficacy of clinical use of adipose-derived stem cells. *Dermatol Surg.* 2008 [Epub ahead of print] [[PubMed](#)]
8. Lin G, Garcia M, Ning H, Banie L, Gio YL, Lue TF, Lin CS. Defining stem and progenitor cells within adipose tissue. *Stem Cells Dev.* 2008 [Epub ahead of print] [[PMC free article](#)] [[PubMed](#)]
9. Kurita M, Aiba-Kojima E, Shigeura T, Matsumoto D, Suga H, Inoue K, Eto H, Kato H, Aoi N, Yoshimura K. Differential effects of three preparations of human serum on expansion of various types of human cells. *Plast Reconstr Surg.* 2008;122:438–448. [[PubMed](#)]
10. Ning H, Lin G, Lue TF, Lin CS. Neuron-like differentiation of adipose tissue-derived stromal cells and vascular smooth muscle cells. *Differentiation.* 2006;74:510–518. [[PubMed](#)]
11. Rodriguez LV, Alfonso Z, Zhang R, Leung J, Wu B, Ignarro LJ. Clonogenic multipotent stem cells in human adipose tissue differentiate into functional smooth muscle cells. *Proc Natl Acad Sci U S A.* 2006;103:12167–12172. [[PMC free article](#)] [[PubMed](#)]
12. Rodbell M. Metabolism of isolated fat cells. I. Effects of hormones on glucose metabolism and lipolysis. *J Biol Chem.* 1964;239:375–380. [[PubMed](#)]
13. Björntorp PKM, Pertoft H, Pettersson P, Sjöström L, Smith U. Isolation and characterization of cells from rat adipose tissue developing into adipocytes. *J Lipid Res.* 1978;19:316–324. [[PubMed](#)]
14. Lendeckel S, Jodicke A, Christophis P, Heidinger K, Wolff J, Fraser JK, Hedrick MH, Berthold L, Howaldt HP. Autologous stem cells (adipose) and fibrin glue used to treat widespread traumatic calvarial defects: Case report. *J Craniomaxillofac Surg.* 2004;32:370–373. [[PubMed](#)]
15. Bella AJ, Lin G, Phonsombat S, Lin CS, Garcia M, Brant WO, Lue TF. Non-cell line induced autologous adult adipose tissue derived stem cells enhance recovery of erectile function in the rat following bilateral cavernous nerve crush injury; Sexual Medicine Society of North America Meeting; 2008. 68 pp.
16. Schaffler A, Buchler C. Concise review: Adipose tissue-derived stromal cells--basic and clinical implications for novel cell-based therapies. *Stem Cells.* 2007;25:818–827. [[PubMed](#)]
17. Rodeheffer MS, Birsoy K, Friedman JM. Identification of white adipocyte progenitor cells in vivo. *Cell.* 2008;135:240–249. [[PubMed](#)]
18. Tang W, Zeve D, Suh JM, Bosnakovski D, Kyba M, Hammer RE, Tallquist MD, Graff JM. White fat progenitor cells reside in the adipose vasculature. *Science.* 2008;322:583–586. [[PMC free article](#)] [[PubMed](#)]
19. Yamamoto N, Akamatsu H, Hasegawa S, Yamada T, Nakata S, Ohkuma M, Miyachi E, Marunouchi T, Matsunaga K. Isolation of multipotent stem cells from mouse adipose tissue. *J Dermatol Sci.* 2007;48:43–52. [[PubMed](#)]

20. Zannettino AC, Paton S, Arthur A, Khor F, Itescu S, Gimble JM, Gronthos S. Multipotential human adipose-derived stromal stem cells exhibit a perivascular phenotype in vitro and in vivo. *J Cell Physiol.* 2008;214:413–421. [[PubMed](#)]
21. Stashower M, Smith K, Williams J, Skelton H. Stromal progenitor cells present within liposuction and reduction abdominoplasty fat for autologous transfer to aged skin. *Dermatol Surg.* 1999;25:945–949. [[PubMed](#)]
22. Clavijo-Alvarez JA, Rubin JP, Bennett J, Nguyen VT, Dudas J, Underwood C, Marra KG. A novel perfluoroelastomer seeded with adipose-derived stem cells for soft-tissue repair. *Plast Reconstr Surg.* 2006;118:1132–1142. [[PubMed](#)]
23. Dudas JR, Marra KG, Cooper GM, Penascino VM, Mooney MP, Jiang S, Rubin JP, Losee JE. The osteogenic potential of adipose-derived stem cells for the repair of rabbit calvarial defects. *Ann Plast Surg.* 2006;56:543–548. [[PubMed](#)]
24. Lee WC, Maul TM, Vorp DA, Rubin JP, Marra KG. Effects of uniaxial cyclic strain on adipose-derived stem cell morphology, proliferation, and differentiation. *Biomech Model Mechanobiol.* 2007;6:265–273. [[PubMed](#)]
25. Ning H, Lin G, Fandel T, Banie L, Lue TF, Lin CS. Insulin growth factor signaling mediates neuron-like differentiation of adipose tissue-derived stem cells. *Differentiation.* 2008;76:488–494. [[PMC free article](#)] [[PubMed](#)]
26. Lee WC, Rubin JP, Marra KG. Regulation of alpha-smooth muscle actin protein expression in adipose-derived stem cells. *Cells Tissues Organs.* 2006;183:80–86. [[PubMed](#)]
27. Andersen DC, Schroder HD, Jensen CH. Non-cultured adipose-derived CD45- side population cells are enriched for progenitors that give rise to myofibres in vivo. *Exp Cell Res.* 2008;314:2951–2964. [[PubMed](#)]
28. Fandel TM, Bella AJ, Tantiwongse K, Garcia M, Nunes L, Thuroff JW, Tanagho EA, Pohl J, Lue TF. The effect of intracavernosal growth differentiation factor-5 therapy in a rat model of cavernosal nerve injury. *BJU Int.* 2006;98:632–636. [[PubMed](#)]
29. Bivalacqua TJ, Deng W, Champion HC, Hellstrom WJ, Kadowitz PJ. Gene therapy techniques for the delivery of endothelial nitric oxide synthase to the corpora cavernosa for erectile dysfunction. *Methods Mol Biol.* 2004;279:173–185. [[PubMed](#)]
30. Bivalacqua TJ, Deng W, Kendirci M, Usta MF, Robinson C, Taylor BK, Murthy SN, Champion HC, Hellstrom WJ, Kadowitz PJ. Mesenchymal stem cells alone or ex vivo gene modified with endothelial nitric oxide synthase reverse age-associated erectile dysfunction. *Am J Physiol Heart Circ Physiol.* 2007;292:H1278–H1290. [[PubMed](#)]
31. Bochinski D, Lin GT, Nunes L, Carrion R, Rahman N, Lin CS, Lue TF. The effect of neural embryonic stem cell therapy in a rat model of cavernosal nerve injury. *BJU Int.* 2004;94:904–909. [[PubMed](#)]
32. Allera-Moreau C, Delluc-Clavieres A, Castano C, Van den Berghe L, Golzio M, Moreau M, Teissie J, Arnal JF, Prats AC. Long term expression of bicistronic vector driven by the FGF-1 IRES in mouse muscle. *BMC Biotechnol.* 2007;7:74. [[PMC free article](#)] [[PubMed](#)]
33. Gonda K, Shigeura T, Sato T, Matsumoto D, Suga H, Inoue K, Aoi N, Kato H, Sato K, Murase S, Koshima I, Yoshimura K. Preserved proliferative capacity and multipotency of human adipose-derived stem cells after

long-term cryopreservation. *Plast Reconstr Surg*. 2008;121:401–410. [[PubMed](#)]

34. Audigier S, Guiramand J, Prado-Lourenco L, Conte C, Gonzalez-Herrera IG, Cohen-Solal C, Recasens M, Prats AC. Potent activation of FGF-2 IRES-dependent mechanism of translation during brain development. *RNA*. 2008;14:1852–1864. [[PMC free article](#)] [[PubMed](#)]

35. Prats AC, Prats H. Translational control of gene expression. Role of IRESs and consequences for cell transformation and angiogenesis. *Prog Nucleic Acid Res Mol Biol*. 2002;72:367–413. [[PubMed](#)]

36. Gonzalez-Herrera IG, Prado-Lourenco L, Pileur F, Conte C, Morin A, Cabon F, Prats H, Vagner S, Bayard F, Audigier S, Prats AC. Testosterone regulates FGF-2 expression during testis maturation by an IRES-dependent translational mechanism. *Faseb J*. 2006;20:476–478. [[PubMed](#)]

37. Kakudo N, Shimotsuma A, Kusumoto K. Fibroblast growth factor-2 stimulates adipogenic differentiation of human adipose-derived stem cells. *Biochem Biophys Res Commun*. 2007;359:239–244. [[PubMed](#)]

38. Rider DA, Dombrowski C, Sawyer AA, Ng GH, Leong D, Hutmacher DW, Nurcombe V, Cool SM. Autocrine fibroblast growth factor 2 increases the multipotentiality of human adipose-derived mesenchymal stem cells. *Stem Cells*. 2008;26:1598–1608. [[PubMed](#)]

39. Suga H, Eto H, Shigeura T, Inoue K, Aoi N, Kato H, Nishimura S, Manabe I, Gonda K, Yoshimura K. Ifats series. FGF-2-induced HGF secretion by adipose-derived stromal cells inhibits post-injury fibrogenesis through a JNK-dependent mechanism. *Stem Cells*. 2008 [Epub ahead of print] [[PubMed](#)]

40. Gonzalez-Herrera IG, Prado-Lourenco L, Teshima-Kondo S, Kondo K, Cabon F, Arnal JF, Bayard F, Prats AC. IRES-dependent regulation of FGF-2 mRNA translation in pathophysiological conditions in the mouse. *Biochem Soc Trans*. 2006;34:17–21. [[PubMed](#)]

41. Zaragosi LE, Ailhaud G, Dani C. Autocrine fibroblast growth factor 2 signaling is critical for self-renewal of human multipotent adipose-derived stem cells. *Stem Cells*. 2006;24:2412–2419. [[PubMed](#)]

42. Deng W, Bivalacqua TJ, Chattergoon NN, Hyman AL, Jeter JR, Jr, Kadowitz PJ. Adenoviral gene transfer of eNOS: High-level expression in ex vivo expanded marrow stromal cells. *Am J Physiol Cell Physiol*. 2003;285:C1322–C1329. [[PubMed](#)]

43. Song YS, Lee HJ, Park IH, Kim WK, Ku JH, Kim SU. Potential differentiation of human mesenchymal stem cell transplanted in rat corpus cavernosum toward endothelial or smooth muscle cells. *Int J Impot Res*. 2007;19:378–385. [[PubMed](#)]

44. Nolzco G, Kovanecz I, Vernet D, Gelfand RA, Tsao J, Ferrini MG, Magee T, Rajfer J, Gonzalez-Cadavid NF. Effect of muscle-derived stem cells on the restoration of corpora cavernosa smooth muscle and erectile function in the aged rat. *BJU Int*. 2008;101:1156–1164. [[PubMed](#)]

45. Song YS, Lee HJ, Park IH, Lim IS, Ku JH, Kim SU. Human neural crest stem cells transplanted in rat penile corpus cavernosum to repair erectile dysfunction. *BJU Int*. 2008;102:220–224. discussion 224. [[PubMed](#)]

46. Garcia-Olmo D, Garcia-Arranz M, Herreros D. Expanded adipose-derived stem cells for the treatment of complex perianal fistula including crohn's disease. *Expert Opin Biol Ther*. 2008;8:1417–1423. [[PubMed](#)]

47. Jack GS, Almeida FG, Zhang R, Alfonso ZC, Zuk PA, Rodriguez LV. Processed lipoaspirate cells for tissue engineering of the lower urinary tract: Implications for the treatment of stress urinary incontinence and

bladder reconstruction. *J Urol.* 2005;174:2041–2045. [[PubMed](#)]